

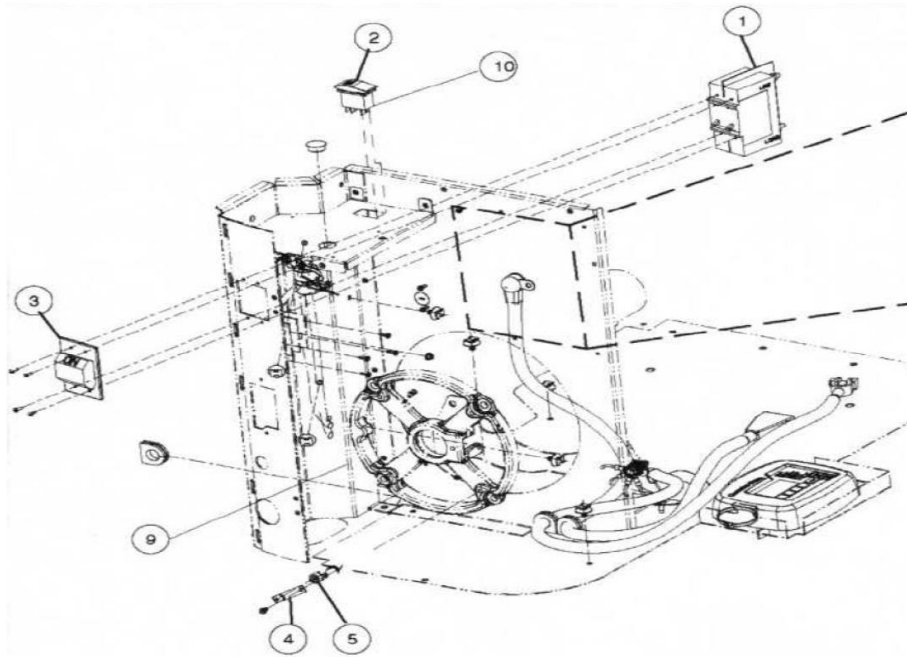
# *How To Check The Oil During A Power Outage*

## *Onan Residential Unit*



- 1.) Open the generator housing by 1<sup>st</sup> unlocking the unit at the handle location, then lifting the top as it rolls back on a 45 degree angle tilted towards the back of the unit.
- 2.) Turn off the breaker (#3 in the diagram below (looks like a house breaker), which is located on the side of the generator. This will disconnect the power to the home but the generator engine will continue to run.

- 3.) Locate the controller inside the generator and move the rocker switch to the “off” position. This will cause the generator engine to shut down.
- 4.) Locate the dipstick and check the oil level.
- 5.) If oil is needed, unscrew the oil fill cover.
- 6.) Add oil in small increments (you don’t want to overfill the generator) and fill to “FULL” mark on the dipstick as needed. (***OIL TYPE: 5W-30 Synthetic***)
- 7.) Replace the dipstick and the oil cover securely.
- 8.) On the controller, reset the rocker to “AUTO” – this will cause the generator to start.
- 9.) Wait 10 seconds and turn the breaker back on– this will reconnect the power to the home.
- 10.) Close the generator housing.



***Please Do Not Hesitate To Call With Any Questions***

***781-294-8300 or 508-362-8304***